



Roles and responsibilities

Class Teacher

Building positive relationships
 Pastoral and Nurture support
 'The Heatherlands Way'
 Use of 'Trackit Lights'
 Jigsaw Sessions
 Trick Box
 Time In & restorative questioning
 Emotional coaching
 Referrals
 Attend Behaviour Surgeries
 Postcards
 'Heatherlands Way' postcards
 Class 'RAYS' (**Behaviour, Wellbeing, Health**)

Year Leaders

Support to class teachers within their year group
 Restorative reflection in year group
 Ensure a consistent approach

Behaviour lead:

Kate Lloyd-Christie

Deputy Headteacher



What are the school values?

'The Heatherlands Way' are the five key values that form a focus each half term.



Postcards are sent regularly to celebrate learning and achievement.

Each month, the class teacher also sends home a postcard to nominate a child in line with the school value of the half term. The child and parent are then invited along to a values assembly. These are held on the last Friday of every month to celebrate demonstration of 'The Heatherlands Way'.



Heatherlands
Primary School

'The Heatherlands Way'

A collective model



What is Trackit Lights?

Our children demonstrating 'The Heatherlands Way' and any green behaviours are rewarded with house points. When children collect house points, these go towards Trackit Light certificates.

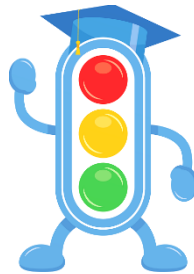
Bronze - 50 house points

Silver - 100 house points

Gold - 200 house points

Platinum - 250 house points

Head teachers – 300+ house points at the end of the year



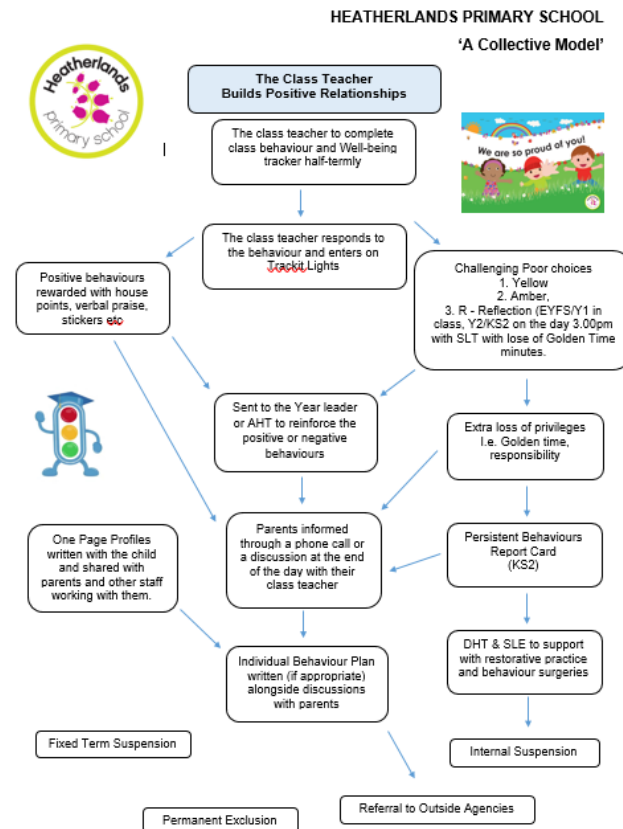
Trackit Light Yellow - 1st warning

Trackit Light Amber - 2nd/final warning

Restorative room and parent informed (Y2 – Y6)

Heatherlands Primary School

collective model



What happens next to support the child with their behaviour?

Trackit Lights – SEE BEHAVIOUR POLICY

When a red is given, SLT are informed automatically. An 'R' must also be recorded. The report that is generated **MUST** be completed.

Restorative room

Senior leaders run the restorative room at 3pm daily in meeting room 2. EYFS/Y1 to have a time in equal to their chronological age, immediately after the incident is recorded.

Behaviour surgeries

The Deputy headteacher monitor the restorative room log monthly. Children identified repeatedly will be met for a behaviour surgery with the PSHE lead on a Friday morning after the monthly values assembly.

Report Cards

The Deputy headteacher will support children in KS2 if they require a daily report card. This will be signed/monitored by the class teacher/SLT.

The ARC

The ARC provides alternative provision at lunchtime through referrals. They can also refer to outreach support or early help. They offer targeted group and 1.1 support linked to well-being. Key strategies will be shared during staff behaviour surgeries.

Exclusions (internal/external)

If a child requires time away from their classroom to support their behaviour, they will be taken to complete their work with a member of staff.

External exclusions – SEE SUSPENSIONS POLICY

