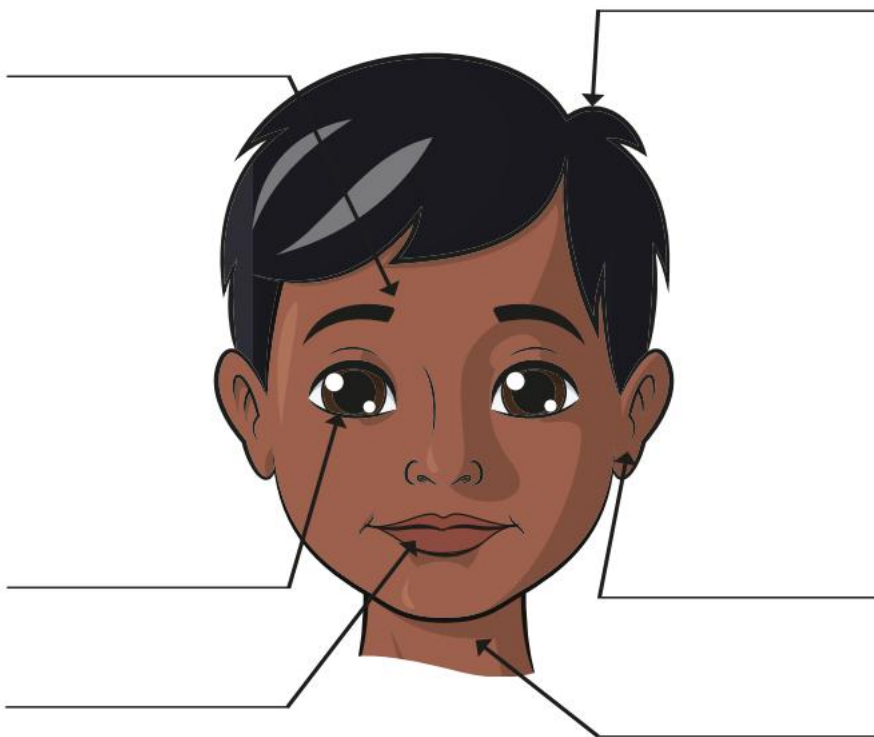


Year 1 Super Me Quiz!

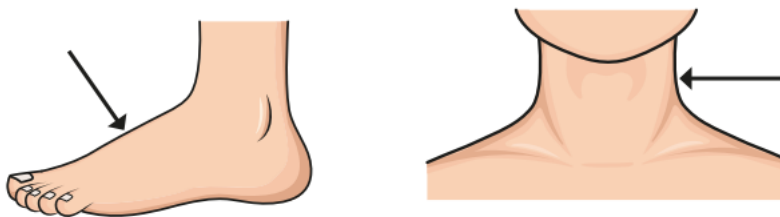
1 Use the words to label the picture.

- ear
- eye
- mouth
- hair
- neck
- head

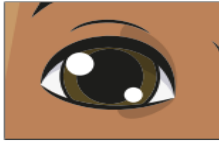


2 Use the words to label the body parts.

- neck
- knee
- elbow
- foot



3 Match the body parts to the senses.



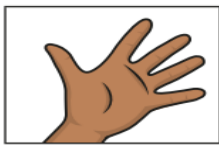
smell



sight



touch

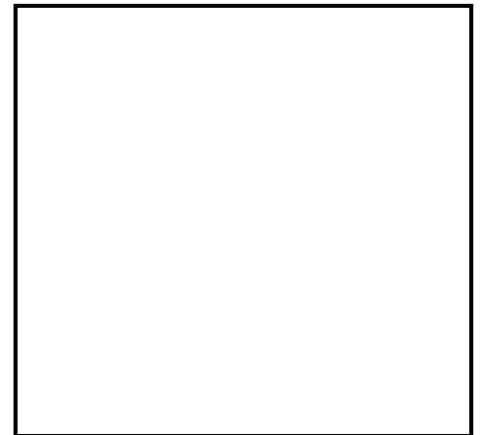


taste



hearing

4. What season are we in now? Draw what the weather can be like and what clothing we might wear.



weather

clothing

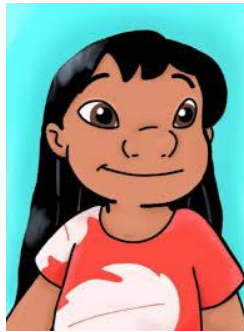
4. How many elements of Art are there?

1

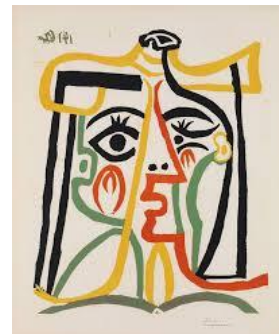
7

10

5. Circle the image of a portrait?



6. Which famous artist created these portraits?



Roy Lichtenstein

Pablo Picasso

7. What type of art is Roy Lichtenstein most known for?

pop art

cubism

surrealism

8. Which three colours does he mostly use in his art?



1. _____

2. _____

3. _____