



Heatherlands
Primary School

'Churchill Chats'



"Hey, this is a marathon, not a sprint."

The race of life is a marathon, not a sprint

At this time of year in schools, we prepare ourselves for what can traditionally be one of the most frantic and relentless periods. We try to fit everything in, hope the weather holds for events like Sports Day, and support children in enjoying the final school "run-in" — especially those taking part in the traditional Year 6 end-of-year production.

The final part of the summer term can often feel like a marathon; you simply have to keep going, sometimes relying on others to pick you up if you stumble. For both staff and children, tiredness can act as the "wall" they hit, which they then work hard to overcome using resilience and determination.

Fortunately, resilience is one of our core school values, so we are well equipped!

Resilience is particularly important at this time of year, as many children are expected to complete national tests and achieve outcomes in line with their peers. These assessments represent the culmination of the hard work and dedication shown by both the children and the adults who support them, all with the aim of helping each child be the very best they can be.

In May, children in Year 6 and Year 2 sit their SATs. Although Year 2 assessments are non-statutory, they remain a helpful measure of attainment and support future planning to address any gaps as children progress through their school journey. Additionally, children in Year 1 take the national phonics screening check, while Year 4 pupils, who have been practising their times tables so diligently, complete the Multiplication Tables Check (MTC).

Our youngest learners in the Early Years are all working towards achieving their developmental milestones and a Good Level of Development (GLD).

While there is a significant amount of statutory assessment taking place, the children of Heatherlands are always well prepared and perform strongly compared with their peers across the country. We know that the "Heatherlands Way," along with a sense of happiness and security in school, helps them to navigate these challenges successfully.

We are always incredibly proud of our children because, when the going gets tough, they rise to the challenge — something locally known as the Heatherlands Way.

As I close, I would like to thank our entire school community for your continued support in ensuring that children come to school in the correct uniform and ready to learn. Through a strong home-school partnership, we can continue to prepare our children for both the challenges and the opportunities that lie ahead as they grow and develop.

"It takes a village to raise a child" is a well-known proverb that reminds us that a whole community plays a vital role in supporting children to grow in a safe and nurturing environment. I am sure this is something we can all agree on.



Finally, I would like to wish all our families a relaxing and restful half-term break. We look forward to welcoming you all back on 1st June, ready for the final stretch of the summer term marathon!

Mr Churchill

Dates for your diary – June 2026

These dates and times are a guide for parents to ensure that you have all the information you will need this month. There may of course be amendments or additions nearer the date/time due to unforeseen circumstances, but we aim to inform you of any changes as soon as we possibly can. Some of the dates will not be relevant to you as they are specific to different year groups/groups of children.

We will send a communications email on/around the 1st of every month and hope that it is of use to you all. This information will also be published on the school

website: <https://www.heatherlands.poole.sch.uk/emails-letters-reminders-from-school/>

SUMMER TERM

WEEK 7

Monday 1st June 2026
BACK TO SCHOOL
Year 4 Multiplication Check Week 1
Tuesday 2nd June 2026
Brownsea Island visit – Swanage class
Thursday 4th June 2026
Coral class assembly 9am STUDIO
Friday 5th June 2026
Wake up Heatherlands from 8.30am
Y2 trip to Beaulieu Motor Museum

WEEK 8

Monday 8th June 2026
Year 4 Multiplication Check Week 2
Year 1 Phonics Screening Check Week
Wednesday 10th June 2026
Year 1 & Year 2 Sports Day 9.10am FIELD
Year 5 & Year 6 Sports Day 1.10pm FIELD
New entrants 'Come & Explore 1' EYFS 3.45pm BY INVITATION
Thursday 11th June 2026
EYFS Sports Day 9.10am FIELD
Year 3 & Year 4 Sports Day 1.10pm FIELD
Friday 12th June 2026
Wake up Heatherlands from 8.30am
Rose class assembly 9am STUDIO

WEEK 9

Monday 15th June 2026
Year 4 Multiplication Check Week 3
Year 6 Careers Day
Year 3, Year 4 & Year 5 test week
Tuesday 16th June 2026
New entrants 'Come & Explore 2' EYFS 3.45pm BY INVITATION
Thursday 18th June 2026
EYFS beach trip

Year 6 Careers Interviews - INVITATION ONLY
Friday 19 th June 2026
INSET DAY – SCHOOL CLOSED

WEEK 10

Monday 22 nd June 2026
HOME LEARNING QUIZ DUE IN
Year 6 Bikeability Week
Year 6 Careers Week Work Experience – INVITATION ONLY
Tuesday 23 rd June 2026
Year 1 Moors Valley Trip
Friday 26 th June 2026
Wake up Heatherlands from 8.30am
TRANSITION DAY/YEAR 6 TRANSFER DAY
EYFS Reports Day – SENT BY EMAIL

WEEK 11

Tuesday 30 th June 2026
Dorchester trip – Victory class
2pm ‘Meet the Teacher 1’ EYFS New Entrants – BY INVITATION
Wednesday 1 st July 2026
HOME LEARNING PROJECTS SET
Dorchester trip – Mayflower class
Thursday 2 nd July 2026
Dorchester trip – Mary Rose class
2pm ‘Meet the Teacher 2’ EYFS New Entrants – BY INVITATION
Friday 3 rd July 2026
Wake up Heatherlands from 8.30am
Kingfisher class assembly 9am STUDIO
Summer Fair from 3.30pm FIELD



Questions to ask your child – June 2026

The year teams publish on their year group web pages to keep you informed of the activities taking place and to enable you to ask your children questions about their learning. We also publish homework on these pages and all knowledge organisers are referenced at the top of each year group page. Have a look at our new look school website at www.heatherlands.poole.sch.uk




<https://www.heatherlands.poole.sch.uk/page/?title=EYFS+blog+posts&pid=250>

Odd One Out – Dinosaurs


Which one is the odd one out? Why?

1




Tyrannosaurus rex

2



Velociraptor

3



Brachiosaurus

- What is the most interesting dinosaur fact you can remember from our topic?
- Using your knowledge from our dinosaur topic, what might hatch from an egg?

Year 1

<https://www.heatherlands.poole.sch.uk/page/?title=Year+1+blog+posts&pid=247>

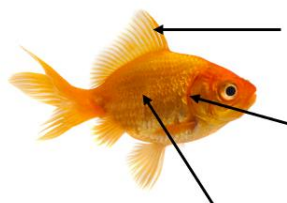
- True or false. Tick or cross the statements.
Mammals have hair or fur?
Mammals are warm blooded?
Mammals lay eggs?

Can you label the fish?

scales

gills

fin



Reptiles are animals with dry scales. Can you circle all the reptiles?



Year 2

<https://www.heatherlands.poole.sch.uk/blog/?pid=237&nid=10>

- Which word is the adverb: “She sings beautifully”?
 - What animal can fly and lay eggs?
 - Name an animal which is a herbivore.

Year 3

<https://www.heatherlands.poole.sch.uk/blog/?pid=238&nid=11>

- Where does a river start and where does it end?
- How does a river change as it flows downstream?
- Why are rivers important to people and the environment?

Year 4

<https://www.heatherlands.poole.sch.uk/blog/?pid=239&nid=12>

- A robot stops when a wire snaps. Why is this?
- Who was the Lady of Shalott and what curse affected her in the poem?
 - $7 \times 8 =$ $6 \times 7 =$ $8 \times 9 =$ $7 \times 9 =$ $6 \times 8 =$
 $12 \times 7 =$ $9 \times 6 =$ $5 \times 7 =$ $8 \times 7 =$ $12 \times 8 =$

Year 5

<https://www.heatherlands.poole.sch.uk/page/?title=Year+5+blog+posts&pid=248>

- Tell me everything you can about fractions/ decimals and percentages.
 - Tell me all about Africa
- Tell me about complimentary, primary and secondary colours

YEAR 6

<https://www.heatherlands.poole.sch.uk/blog/?pid=241&nid=13>

- What is meant by inheritance?

Give one example of a characteristic that can be passed from parents to their offspring.

- How does adaptation help animals or plants survive in their environment?

Give an example to support your answer.

- What is evolution?

Explain how a species might change over a long period of time.

Key Information– June 2026



Reminder – Shell Bay Trip

Please remember that it is our trip to Shell Bay on Thursday 18th June.

If you have not done so already, please complete the online form and permissions. We also kindly ask for a contribution of £10 to help cover the cost of transport.

If you have offered to help, we will let you know after half-term whether you have been allocated a seat on the coach. Otherwise, you are more than welcome to drive and car share. The more the merrier – thank you for your support!



Year 6 transition day is Friday 26th June - on this day children must be dropped off and collected from their new school (they do not come to Heatherlands on this day).

- Tuesday 30th June - Victory class visit to Kimmeridge
- Wednesday 1st July - Mayflower class visit to Kimmeridge
- Thursday 2nd July - Mary Rose class visit to Kimmeridge (please make payment for this trip on Arbor asap)

Trips and Visits

There are always a lot of trips and visits that take place in the Summer term. Please can you all return any permission forms, payments etc as soon as possible after receiving them as it helps us to plan and prepare the events quickly and efficiently. Thank you.

National Year Of Reading 2026 - Let's Go All In!

We are excited to join Pop-Up Bookshop's new collective community fundraising campaign bringing together local businesses, families and schools... 10,000 Hours Of Fun Reading!

The Pop-Up Bookshop will launch the campaign in assembly next week and the printed reading challenge sheets will be sent home and via email. The Heatherlands sponsored reading challenge runs from 27th April for 6 weeks until 5th June.

- The Heatherlands annual target is to achieve 1,000 hours of reading!
- Pupil reading targets can be tailored to individual abilities and interests.
- The challenge focuses on Reading For Fun - any and all texts your child wants to read are encouraged!
- 100% sponsorship funds new books for school to benefit all pupils! The sponsorship form and time tracker included in this email.
- This challenge is fully inclusive for all pupils - sponsorship is optional. Full instructions are listed in the printed challenge sheet.

Thank you for supporting Heatherlands in this fun reading campaign.

www.popupbookshop.co.uk/go-all-in-campaign

We are always proud to celebrate the children of Heatherlands achievements outside of school. Please continue to send in photos and information for our monthly parent communications to the office email.

Thank you.



Whole school reminders – June 2026



‘Wake up Heatherlands’ runs each Friday morning, on the top playground. As always, we welcome you all on site with your child/ren to join in with the dance routines and to encourage them to dance along too. As the gates open at 8.30am we will put on the music, and we will dance together until the children go into class at 8.45am.

Uniform

Please ensure you have labelled all your child's uniform, PE kit, hat, coat etc. We always seem to have an enormous amount of lost property with no names and nowhere to store this. We frequently clear this and have to throw a lot away! The lost property bins are stored outside the school office near the bike shed.

Supporting Reading Through Bug Club

While we are mindful of screen time, our online 'Bug Club' platform provides a safe, structured way for children to access a wide range of texts perfectly matched to their reading level. The embedded comprehension questions help strengthen children's understanding—an essential part of becoming a confident and capable reader.

A healthy balance of physical and digital reading is absolutely fine, and in the long term it does *not* negatively affect progress. If your child is using a tablet, using it for reading is a genuinely positive choice. The key factor is consistency.

Easyfundraising

As you know, Heatherlands Primary School is registered with easyfundraising, which means you can raise FREE donations for us every time you shop online. Over 7,000 brands will donate to us when you use easyfundraising to shop with them – at no extra cost to yourself!

These donations really mount up and make a BIG difference to us, so we'd really appreciate it if you could take a moment to sign up and support us. It's completely FREE and only takes a moment. You can find our easyfundraising page at https://www.easyfundraising.org.uk/causes/heatherlands-primary-school/?utm_medium=email&utm_campaign=pmc&utm_content=gs-email1

Thank you so much!

<https://www.easyfundraising.org.uk/causes/heatherlands-primary-school>



Space net

The space net which is situated on the lower playground is **not for use before or after school**. The children have timetabled slots during the school day which is monitored by specific staff for health and safety reasons.

Breakfast Lounge & Explorers

The school provides wrap around care from 7.45am - 8.45 am and from 3.15 to 5.15pm. This needs to be booked and paid for at least a week in advance. Please book via Arbor or contact the office for further information.

Please do not hesitate to contact the office via phone 01202 743918 or email: heatherlands.office@coastalpartnership.co.uk if you have any questions.

The office opening hours are **8am - 4.15pm**.

The school website also contains a lot of relevant and useful information:

www.heatherlands.poole.sch.uk



Friends of Heatherlands - June 2026

Thank you to everyone who donated clothes for our Bags2School collection. We made £35. Look out for future dates in the Autumn term.

We held our annual Quiz night in May. We had 11 teams including 3 staff teams. It was a great atmosphere with lots of laughter!! A huge thank you to Mr Arrowsmith and Mrs Nolan for being fantastic hosts!!! We raised £450!!!



Our next big event is the **Summer Fair on Friday 3rd July** and we need you!!!

This event needs lots of help to make it a great success. This could be one or more of the following:

- Running a stall on the day
- Helping to set up on the day
- Preparing a stall on the run up to the day
- Being behind the scenes and organising something

♥ **Contact Us** at friendsofheatherlands@gmail.com

If you'd like to be involved with the PTA — whether it's helping behind the scenes, supporting at events, or spreading the word — we'd love to hear from you.

✦ The more help we have, the bigger and better our events will be! ✦



Coastal Learning Partnership (CLP)

Heatherlands continues to work closely with our multi academy trust (CLP) to help us to become even better at what we do and to help us to work consistently with our partner schools.